

We support PV systems
Formerly Everest Solar Systems 



MiniRail XPress System

ASSEMBLY INSTRUCTIONS



Content

▶ About Us	3
▶ General Safety Information	4
· Roof requirements	5
· Structural requirements	5
· Important mounting instructions	5
▶ Bonding and Grounding	6
▶ Fire Rating	7
▶ Compatible Modules	8
▶ Tools Overview	12
▶ Components	13
▶ Assembly	15
▶ Notes	21

Quality tested – several certifications

K2 Systems stands for secure connections, highest quality and precision. Our customers and business partners have known that for a long time. Independent institutes have tested, confirmed and certified our capabilities and components.

Please find our quality and product certificates under:
k2-systems.com/en-US/company/quality-management-and-certificates

Engineering strength is at our core



With sophisticated product innovations and a deep customer focus, K2 Systems is the engineering leader for all your mounting system needs. We are a market leader with more than 20 GW installed worldwide.

We offer proven product solutions and innovative designs. Wind tunnel testing along with advanced structural and electrical validation to facilitate permitting, design and installation. Our designs result in cost competitive racking systems with dedicated support that will position you to win more projects.

We partner with our customers and suppliers for the long-term. High quality materials and cutting edge designs provide a durable, yet functional system. Our product line is comprised of a few, coordinated components that lower the cost of materials, and simplify installation, saving you time and money. All backed by German engineering, a long track record of quality and a company that is here to stay.

Thank you for choosing K2 Systems for your Solar PV Project.

General Safety Information

Please note that our general mounting instructions must be followed at all times and can be viewed online at <https://k2-systems.com/en-US/downloads/documentation>

- ▶ The equipment may only be installed and operated by qualified and adequately trained installers.
- ▶ Prior to installation, ensure that the product complies with on-site static loading requirements. For roof-mounted systems, the roof load-bearing capacity must always be checked.
- ▶ National and local building regulations and environmental requirements must be adhered to.
- ▶ Compliance with health and safety regulations, accident prevention guidelines and applicable standards are required.
 - Protective equipment such as safety helmet, boots and gloves must be worn.
 - Roofing works must be in accordance with roofing regulations utilizing fall protection safeguards when eaves height exceeds 3 m.
 - At least two people must be present for the duration of the installation work in order to provide rapid assistance in the event of an emergency.
- ▶ K2 mounting systems are continuously developed and improved and the installation process may thereby change at any time. Prior to installation consult our website at: <https://k2-systems.com/en-US/downloads/documentation> for up-to-date instructions. We can send you the latest version on request.
- ▶ The assembly instructions of the module manufacturer must be adhered to.
- ▶ Equipotential bonding/grounding/earthing between individual parts is to be performed according to country specific standards, as well as national laws and regulations.
- ▶ At least one copy of the assembly instructions should be available on site throughout the duration of the installation.
- ▶ Failure to adhere to our general safety and assembly instructions and not using all system components, K2 is not liable for any resulting defects or damages. We do not accept liability for any damage resulting in the use of competitor's parts. Warranty is excluded in such cases.
- ▶ If all safety instructions are adhered to and the system is correctly installed, there is a product warranty entitlement of 25 years! We strongly recommend reviewing our terms of guarantee, which can be viewed at <https://k2-systems.com/en-US/downloads/documentation> We will also send this information on request.
- ▶ Dismantling of the system is performed in reverse order to the assembly.
- ▶ K2 stainless steel components are available in different corrosion resistance classes. Each structure or component must be carefully checked for possible corrosion exposure.

The following guidelines apply



The MiniRail XPress System can be installed as standard under the following conditions. Even if the system is capable of meeting higher demands through the integration of safety standards, please get in touch with your contact at K2 Systems if the specified values are exceeded.



Roof requirements

- ▶ The structural integrity of the roof must be reviewed on site and approved by a licensed structural engineer.
- ▶ Maximum roof height: 30 ft
- ▶ Roof slope: 0° to 45°
- ▶ Minimum metal roof deck thickness: 26 gauge



Structural requirements

- ▶ Wind speed: 150 mph max
- ▶ Ground snow load: 60 psf max

Bonding and Grounding

Appropriate means of bonding and grounding are required by regulation. The information provided in this manual shall always be verified with local and national building codes.

K2 Systems has obtained a UL 2703 system listing from Underwriter's Laboratories [UL].

A sample bonding path diagram is shown in Figure 1 below. Your specific installation may vary, based upon site conditions and your AHJ's requirements. Caution: module removal may disrupt the bonding path and could introduce the risk of electric shock. Additional steps may be required to maintain the bonding path. Modules should only be removed by qualified persons in compliance with the instruction manual.

In case of module removal, a temporary ground lug and wire will be required to attach to the module to maintain the bond path.

Each electrical connection has been evaluated to a maximum fuse rating of 30A. Every row of modules must be connected to at least one MiniRail XPress Base having a ground lug, although additional may be used for redundancy. When installed per these installation instructions, all connections meet the requirements of NEC 690.43.

K2's MiniRail XPress System was tested with modules listed on page 8.

This racking system may be used to ground and/or mount a PV module complying with UL 1703 only when the specific module has been evaluated for grounding and/or mounting in compliance with the included instructions.

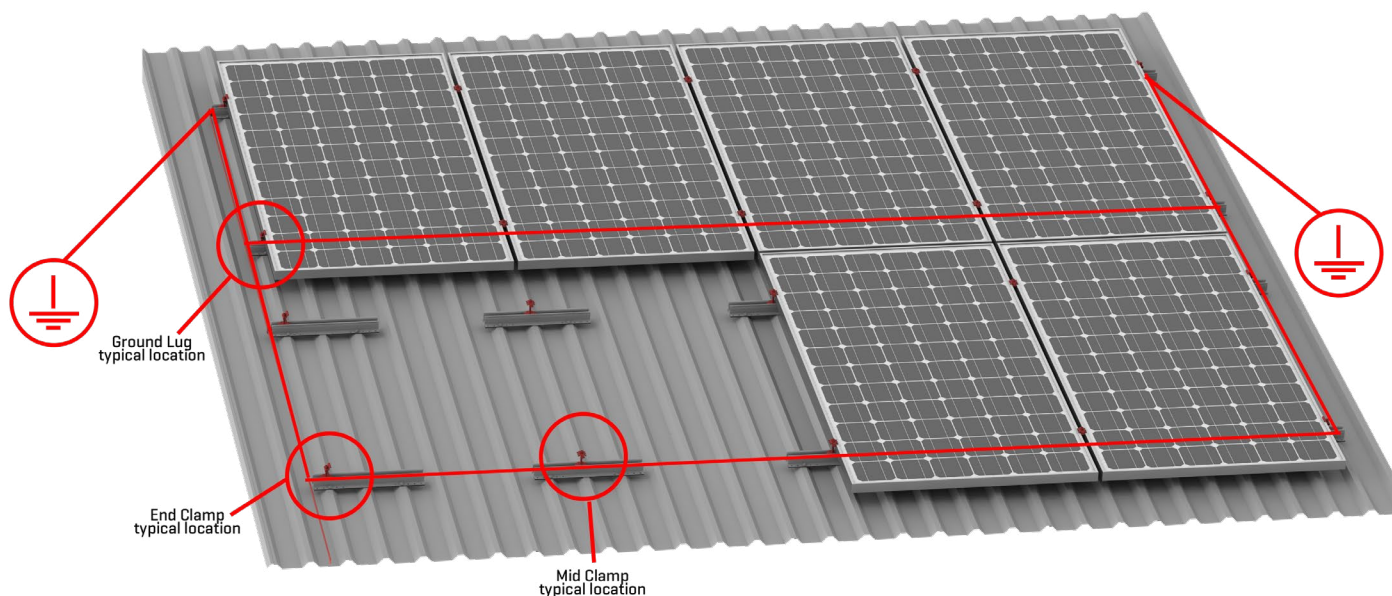


Figure 1: Bonding connections and bond path shown in red. For certain jurisdictions, bonding and grounding connections are identified at typical locations.



Fire Rating

The MiniRail XPress System has undergone fire performance testing in accordance with UL 2703, Fire Performance. A System Class A fire rating is achieved when using MiniRail XPress under the following conditions:

- ▶ Roof slope of 0° to 45°
- ▶ Used in combination with a UL 1703 Listed module with a fire performance rating of Type 1, Type 2, or Type 3. Consult the module manufacturer for specific fire performance rating information.
- ▶ CrossRail may be mounted using any stand-off height to maintain the Class A fire rating. Always consult the module manufacturer's installation instructions to ensure your installation is in compliance with their UL 1703 Listing.
- ▶ The results of the racking system do not improve a roof covering Class rating.

All documentation can be found on UL's Online Database as well as K2 Systems' website.

Compatible Modules

K2's MiniRail XPress System was tested with the following:

- ▶ UL/NRTL Listed Aptos Solar Modules:
 - DNA-120-MF26-XXXW
 - DNA-144-MF26-XXXW
 - DNA-120-BF23-XXXW
 - DNA-120-MF23-XXXW
 - DNA-144-BF23-XXXW
 - DNA-144-MF23-XXXW
- ▶ UL/NRTL Listed Axitec Modules:
 - AC-xxP/156-60S
 - AC-xxxM/156-60S
 - AC-xxxP/60V
 - AC-xxxP/60xV
 - AC-xxxP/60S
 - AC-xxxP/60x
 - AC-xxxMH/120S
 - AC-xxxM/60V
 - AC-xxxM/60xV
 - AC-xxxMH/120V
 - AC-xxxM/60S
 - AC-xxxM/60x
 - AC-xxxP/156-72S
 - AC-XXXP/72V
 - AC-XXXP/72XV
 - AC-XXXP/72S
 - AC-XXXP/72X
 - AC-XXXMH/144S
 - AC-XXXM/72V
 - AC-XXXM/72XV
 - AC-XXXMH/144V
 - AC-XXXM/72S
 - AC-XXXM/72X
- ▶ UL/NRTL Listed Boviet Modules:
 - BVM6612M 72-Cell Mono
- ▶ UL/NRTL Listed Canadian Solar Inc. Modules:
 - CS6U-xxx
 - CS6K-xxx
 - CS6X-xxx
 - CS6P-xxx
 - CS3K-xxxP
 - CS3K-xxxMS
 - CS3U-xxxP
 - CS3U-xxxMS
 - CS3W-xxxP
 - CS3U-xxxPB-AG
 - CS3U-xxxMB-AG
 - CS3W-xxxPB-AG
 - CS1H-xxxMS
- ▶ CONTINUED - Canadian Solar Inc Modules:
 - CS6K-xxxM
 - CS6K-P-FG DYMOND
 - CS1Y-xxxMS
 - CS3N-xxxMS
- ▶ UL/NRTL Listed CertainTeed Modules:
 - CTXXXHC11-04
 - CTXXXHC00-04
 - CTxxxHC11-06
- ▶ UL/NRTL Listed ET Solar Modules:
 - ET-M660xxxBB
- ▶ UL/NRTL Listed Hansol Modules:
 - UB-AN1 Black 270-300
 - UBAN1 Silver 270-300
 - UD-AN1 330-360
- ▶ UL/NRTL Listed Hanwha Q Cells Modules:
 - Q.PEAK- G4.1/MAx xxx
 - Q.PEAK BLK G4.1 xxx
 - Q.PRO G4 xxx
 - Q.PLUS G4 xxx
 - Q.PEAK-G4.1/TAA xxx
 - Q.PEAK BLK G4.1/TAA xxx
 - Q.PLUS BFR G4.1/TAA xxx
 - Q.PLUS BFR G4.1/MAx xxx
 - B.LINE PLUS BFR G4.1 xxx
 - B.LINE PRO BFR G4.1 xxx
 - Q.PEAK DUO-G5 xxx
 - Q.PEAK DUO BLK-G5 xxx
 - Q.PEAK DUO-G8 xxx
 - Q.PEAK DUO BLK-G8 xxx
 - Q.PEAK DUO-G7 xxx
 - Q.PEAK DUO BLK-G7 xxx
 - Q.PEAK DUO G7.2 xxx
 - Q.PEAK DUO-G6 xxx
 - Q.PEAK DUO BLK-G6 xxx
 - Q.PEAK DUO BLK-G6+ xxx
 - Q.PEAK DUO-G6+ xxx
 - Q.PEAK DUO-G8+ xxx
 - Q.PEAK DUO BLK-G8+ xxx
 - Q.PEAK DUO L-G8.3 xxx
 - Q.PEAK DUO L-G8.2 xxx
 - Q.PEAK DUO L-G8.1 xxx
 - Q.PEAK DUO L-G8 xxx
 - Q.PEAK DUO L-G7.3 xxx
 - Q.PEAK DUO L-G7.2 xxx
 - Q.PEAK DUO L-G7.1 xxx
 - Q.PEAK DUO L-G7 xxx
- ▶ CONTINUED - Hanwha Q Cells Modules:
 - Q.PEAK DUO L-G6 xxx
 - Q.PEAK DUO L-G6.2 xxx
 - Q.PEAK DUO L-G6.3 xxx
 - Q.PLUS DUO L-G5 xxx
 - Q.PLUS DUO L-G5.1 xxx
 - Q.PLUS DUO L-G5.2 xxx
 - Q.PLUS DUO L-G5.3 xxx
 - Q.PEAK DUO L-G5.2 xxx
 - Q.PEAK DUO L-G5.3 xxx
 - Q.PEAK L-G4.2 xxx
 - Q.PEAK L-G4.1 xxx
 - Q.PLUS L-G4.2 xxx
 - Q.PLUS L-G4.1 xxx
 - Q.PLUS L-G4 xxx
 - Q.PEAK DUO BLK G6+/SC xxx
 - Q.PEAK DUO G5/SC xxx
 - Q.PEAK DUO BLK G5/SC xxx
 - Q.Plus BFR-G4.1xxx
 - Q.Pro BFR-G4.1xxx
 - Q.Pro-G4.1/SCxxx
 - Q.PLUS BFR G4.1 xxx
 - Q.PRO BFR G4 xxx
 - Q.PRO BFR G4.1 xxx
 - Q.PRO BFR G4.3 xxx
 - Q.PEAK-G4.1 xxx
 - Q. PEAK DUO BLK G6+/TS XXX
 - Q.PEAK DUO G5/TS-XXX
 - Q.PEAK DUO BLK G6/TS XXX
 - Q.PEAK DUO G6/TS-XXX
 - Q.PEAK DUO G6+/TS-XXX
 - Q.PEAK DUO ML-G9 XXX
 - Q.PEAK DUO ML-G9.2 XXX
 - Q.PEAK DUO ML BLK-G9 XXX
 - Q.PEAK DUO ML BLK-G9.2 XXX
 - Q.PEAK DUO ML BLK-G9.3 XXX
 - Q.PEAK DUO XL-G9 XXX
 - Q.PEAK DUO XL-G9.2 XXX
 - Q.PEAK DUO XL BLK-G9 XXX
 - Q.PEAK DUO XL BLK-G9.2 XXX
 - Q.PEAK DUO XL BLK-G9.3 XXX
 - Q.PEAK DUO XL -G9.3 XXX
 - Q.PEAK DUO ML -G9.3 XXX
 - Q.PEAK DUO ML BLK -G9.3 XXX
 - Q.PEAK DUO ML -G9 XXX
 - Q.PEAK DUO ML -G9+ XXX
 - Q.PEAK DUO BLK ML -G9+ XXX
 - Q.PEAK DUO BLK ML -G9 XXX
- ▶ UL/NRTL Listed Hyundai Modules:
 - HiS-MxxxMG
 - HiS-MxxxMI

Compatible Modules continued



K2's MiniRail XPress System was tested with the following:

▶ CONTINUED - Hyundai Modules:

- HiS-MxxxTI
- HiS-MxxxRI
- HiS-SxxxRI
- HiS-MxxxRG

▶ UL/NRTL Listed Itek Modules

- IT-xxx-SE
- Hipro TP672M-xxx

▶ UL/NRTL Listed JA Solar Modules:

- JAP6[DG]
- JAM6[K]-60-xxx/4BB

▶ UL/NRTL Listed Jinko Solar Modules::

- JKMxxxPP-72-DV
- JKMxxxPP-60-DV
- JKMxxxM-60HBL
- JKMxxxM-72HL-V
- JKMxxxM-72HL-TV
- JKMxxx-P-60
- JKMxxxM-72HL4-TV
- JKMxxxM-6RL3-B

▶ UL/NRTL Listed Kyocera Modules:

- KUxxxMCA

▶ UL/NRTL Listed LG Electronics Inc. Modules:

- LGxxxS1C-G4
- LGxxxN1C-G4
- LGxxxS2WG4
- LGxxxN1K-G4
- LGxxxN2W-G4
- LGxxxN1K-A5
- LGxxxQ1C-V5
- LGxxxQ1K-V5
- LGxxxN2W-A5
- LGxxxS2W-A5
- LGxxxN2T-A5
- LGxxxQ1C-A5
- LGxxxQ1K-A5
- LGxxxN2W-V5
- LGxxxN1C-V5
- LGxxxN1W-V5
- LGxxxN1K-V5
- LGXXXN2W-V5
- LGXXXN1C-V5
- LGXXXN1W-V5
- LGXXXN1K-V5
- LGXXXN2T-V5
- LGXXXN1C-N5

▶ CONTINUED - LG Electronics Inc. Modules:

- LGXXXQ1C-N5
- LGXXXQ1K-N5
- LGXXXN1K-L5
- LGXXXN2W-L5
- LGXXXN2T-L5
- LGXXXN1W-L5
- LGXXXN1T-L5
- LGXXXA1C-V5
- LGXXXA1K-V5
- LGXXXM1C-N5
- LGXXXM1K-L5
- LGXXXQ1C-A6
- LGXXXQ1K-A6
- LGXXXQAC-A6
- LGXXXQAK-A6
- LGXXXN1C-A6
- LGXXXN1K-A6
- LGXXXN2W-E6
- LGXXXN2W-E6.AW5
- LGXXXN2T-E6
- LGXXXN1K-B6
- LGXXXQ1C-A6
- LGXXXQ1K-A6
- LGXXXQAC-A6
- LGXXXQAK-A6
- LGXXXN1C-A6
- LGXXXN1K-A6
- LGXXXN2W-E6
- LGXXXN2W-E6.AW5
- LGXXXN2T-E6
- LGXXXN1K-B6
- LGXXXA1C-A6
- LGXXXM1C-A6
- LGXXXM1K-A6
- LGxxxN16-E6

▶ UL/NRTL Listed Longi Modules:

- LR6-72-xxxM [xxx=320-350]
- LR6-72HV-xxxM [xxx=320-350]
- LR6-72BK-xxxM [xxx=320-350]
- LR6-72PE-xxxM [xxx=340-380]
- LR6-72PH-xxxM [xxx=340-380]
- LR6-72PB-xxxM [xxx=340-380]
- LR6-72HPB-xxxM [xxx=360-385]
- LR6-60-xxxM [xxx=270-300]
- LR6-60HV-xxxM [xxx=270-300]
- LR6-60BK-xxxM [xxx=270-300]
- LR6-60PE-xxxM [xxx=280-320]
- LR6-60PH-xxxM [xxx=280-320]
- LR6-60PB-xxxM [xxx=280-320]

▶ CONTINUED - Longi Modules:

- LR6-72BP-xxxM
- LR6-60BP-xxxM
- LR6-72HBD-xxxM
- LR6-60-xxxM
- LR6-60BK-xxxM
- LR6-60PE-xxxM
- LR6-60PB-xxxM
- LR6-60PH-xxxM
- LR6-60HPB/HIB-xxxM
- LR6-60HPP/HIH-xxxM
- LR6-72-xxxM
- LR6-72BK-xxxM
- LR6-72HV-xxxM
- LR6-72PE-xxxM
- LR6-72PB-xxxM
- LR6-72PH-xxxM
- LR6-72HPP/HIH-xxxM
- LR6-72BP-xxxM
- LR6-72HBD/HIBD-xxxM
- LR6-60BP-xxxM
- LR6-60HBD/HIBD-xxxM
- LR4-60HPP/HIH-xxxM
- LR4-60HPB/HIB-xxxM
- LR4-72HPP/HIH-xxxM
- LR4-72HBD/HIBD-xxxM
- LR4-72HBD/HIBD-xxxM

▶ UL/NRTL Listed Lumos Modules:

- LSxxxx-60M-B/C

▶ UL/NRTL Listed Luxor Solar Modules:

- Lx-xxxP
- Lx-xxxM

▶ UL/NRTL Listed Mission Solar Modules:

- MSExxxSB1J
- MSExxxS05T
- MSExxxS04J
- MSExxxSQ6S
- MSExxxS06J
- MSExxxSQ4S
- MSExxxSQ5T
- MSExxxSQ5K
- MSExxxSQ8T
- MSExxxSQ8K
- MSExxxSQ9J
- MSExxxSQ9S
- MSExxxSR8T
- MSExxxSR8K

Compatible Modules continued

K2's MiniRail XPress System was tested with the following:

- ▶ CONTINUED - Mission Solar Modules:
 - MSExxxSR9S
 - MSExxxSB1J
 - MSExxxSX5T
 - MSExxxSX5K
 - MSExxxSX6S
 - MSExxxSX6W
 - MSExxxSX6Z
 - MSExxxSX5R
- ▶ UL/NRTL Listed Panasonic Modules:
 - VBHNxxxSA16
 - VBHNxxxKA01
 - VBHNxxxKA03
 - VBHNxxxKA04
 - VBHNxxxSA17
 - VBHNxxxSA18
 - VBHNxxxSA17E
 - EVPVxxx
 - EVPVxxxK
- ▶ UL/NRTL Listed Peimar Modules:
 - SGxxxP-[BF]
 - SGxxxP
 - SGxxxM-[BF]
 - SGxxxM
- ▶ UL/NRTL Listed Phono Solar Modules:
 - PSxxxMG-20/U
 - PSxxxPG-20/U
 - PSxxxM-20/U
 - PSxxxMH-20/U
- ▶ UL/NRTL Listed Prism Solar Modules:
 - Bi48 xxx Bifacial
 - Bi60 xxx Bifacial
- ▶ UL/NRTL Listed REC Modules:
 - RECxxxTP2 BLK2
 - RECxxxTPS 72
 - RECxxxTP2S 72 XV
 - RECxxxTP2SM 72 XV
 - RECxxxTP2SM 72
 - RECxxx NP
 - RECxxx NP Black
 - RECxxxAA
 - RECxxxAA Black
 - RECxxxTP4
 - RECxxxAAPure
 - RECxxxTP4Black
- ▶ UL/NRTL Listed Sanyo Electric Co Ltd of Panasonic Group Modules:
 - VBHNxxxSA16
 - VBHNxxxSA17
 - VBHNxxxSA18
 - VBHNxxxSA17
 - VBHNxxxSA18
 - VBHNxxxKA01
 - VBHNxxxKA03
 - VBHNxxxKA04
- ▶ UL/NRTL Listed Seraphim Modules:
 - SEG-XXX-6MA-HV
 - SEG-XXX-BMA-HV
- ▶ UL/NRTL Listed Silfab Modules:
 - SLAxxxM
 - SLG-M-xxx
 - SLA-x-xxx
 - SLG-x-xxx
 - SIL-xxx BL
 - SIL-xxx HL
 - SIL-xxx NL
 - SIL-xxx ML
 - SIL-xxx NT
 - SIL-xxx BK
 - SIL-xxx NU
 - SIL-xxx NX
 - SIL-xxxHC
- ▶ UL/NRTL Listed Sharp Modules:
 - NU-SCxxx
 - NU-SAxxx
- ▶ UL/NRTL Listed Solaria Modules:
 - PowerxT® -xxxR-PD
 - PowerxT® -xxxR-BD
 - PowerxT® XXXR-PM
- ▶ UL/NRTL Listed Solarworld Modules "Sunmodule":
 - Plus SW XXX Mono
 - Plus SW XXX Poly
- ▶ UL/NRTL Listed Soluxtec Modules:
 - FR xxx Wp
 - Power Slate 54 Mono Dark Series
 - Power Slate 54 Mono Series
- ▶ UL/NRTL Listed SunPower Modules:
 - SPR-E19-xxx
 - SPR-E20-xxx
- ▶ UL/NRTL Listed Sunprime Modules:
 - GxB-xxx
 - GxB-xxxSM
 - GxB-xxxSL
- ▶ UL/NRTL Listed Sunspark Modules:
 - SST-275-300M
 - SMX-250-265P
 - SST-xxxM 60 cell
 - SST-xxxM 72 cell
 - SST-xxxMB 60 cell
 - SST-XXXM3B-60/72
 - SST-XXXM3-60/72
 - SST-XXXM3B-60/72
- ▶ UL/NRTL Listed S-Energy Modules:
 - SN15-60PAE/PCE-xxxV
 - SN10-60PAE/PBE/PCE-xxxV
 - SN15-60MAE/MCE-xxxV
 - SN10-60MAE/MCE-xxxV
 - SNxxxM-10T[SN60]
 - SN15-72PAE/PCE-xxxV
 - SN10-72PAE/PBE/PCE-xxxV
 - SN15-72MAE/MCE-xxxV
 - SN10-72MAE/MBE/MCE-xxxV
 - SN20-60MAE/MBE/MCE-xxxV
 - SN25-60MAE/MCE-xxxV
 - SC20-60MAE/MBE/MCE-xxxV
 - SC25-60MAE/MCE-xxxV
 - SN20-72MAE/MBE/MCE-xxxV
 - SN25-72MAE/MCE-xxxV
 - SC20-72MAE/MBE/MCE-xxxV
 - SC25-72MAE/MCE-xxxV
 - SD25-60BDE-xxxV
 - SD25-72BDE-xxxV
- ▶ UL/NRTL Listed Talesun Modules:
 - Hipro TP660M-xxx
 - Hipro TP672M-xxx
- ▶ UL/NRTL Listed Trina Solar Modules:
 - TSM-xxxDE14A
 - TSM-xxxDD05A.08
 - DUOMAX SPECS 1. PEG14
 - DUOMAX SPECS 2. PEG5
 - DUOMAX SPECS 3. PEG5.07
 - DUOMAX SPECS 4. PDG5

Compatible Modules continued



K2's MiniRail XPress System was tested with the following:

▶ CONTINUED - Trina Solar Modules:

- TSM-DE15H(II)
- TSM-DE15M(II)
- TSM-DD06M.05(II)
- TSM-DD06H.05(II)
- TSM-DD06M.t5(II)
- TSM-DD06H.T5(II)
- TSM-PE15H
- TSM-DEG15HC.20(II)
- TSM-DEG15MC.20(II)
- TSM-DEG6HC.20(II)
- TSM-DEG6MC.20(II)
- TSM-xxxDE15V(II)
- TSM-xxxDE19
- TSM-xxxDEG15VC.20(II)
- TSM-xxxDEG19C.20

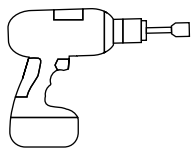
▶ UL/NRTL Listed V Energy Modules:

- Series 200 PV

▶ UL/NRTL Listed Yingli Solar Modules:

- YL-xxxP-29b
- YL-xxx-35b

Tools Overview



13mm



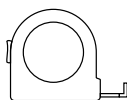
6 - 35 Nm
[4.5 - 22.2 lb-ft]



6mm



≥ 3.0 m



≥ 6.0 m

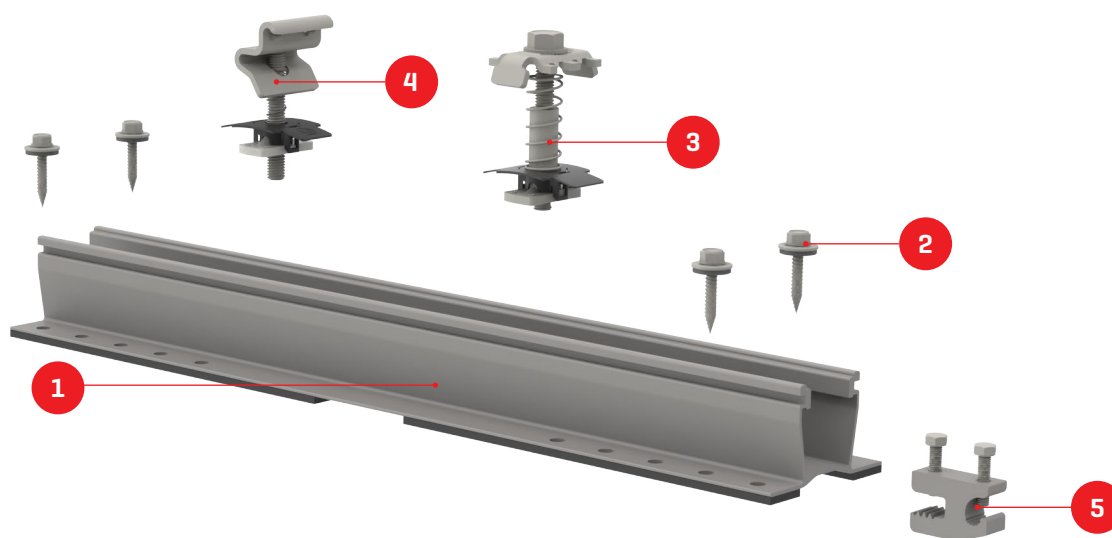
Torque Overview

- ▶ M10 T-Bolts: 25.8 ft-lb [35 Nm]
- ▶ WEEB Lug 10.3: 15 ft-lb [20.3 Nm]
- ▶ End Clamp UL2703+: M8 Allen Bolts 10.3 ft-lb [14 Nm]
- ▶ All other components: M8 Hex Bolts: 10.3 ft-lb [14 Nm]
- ▶ Self-tapping screws: Torque until EPDM washer is compressed flush with MiniRail flange

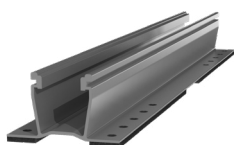
Tools and materials for the installation of third party items such as roof attachment products, roof covering and sealing products or items used for bonding and grounding are not listed here. Please refer to the instructions of those third party products.

Components

Trapezoidal sheet assembly



1 4000667/4000073



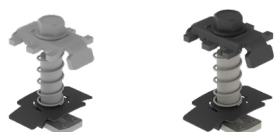
MiniRail XPress Base

2 4000672



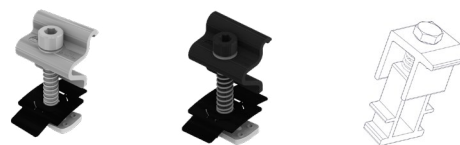
Self-tapping screw with sealing washer

3 4000601-H/4000602-H



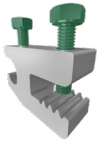
Mid Clamp, 13mm Hex
30 - 47 mm module frame height

4 4000429/4000430/4000197



End Clamp
30 - 50 mm module frame height

5 4000960

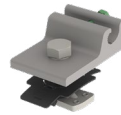


ILSCO Lug

Optional Components & Accessories



Yeti Clamp, 13mm Hex
Hidden End Clamp
4000050-H



Everest Ground Lug, 13mm Hex
4000006-H



**CR Microinverter & Optimizer Mounting Kit,
13mm Hex**
4000629-H



TC Wire Clip
4000069



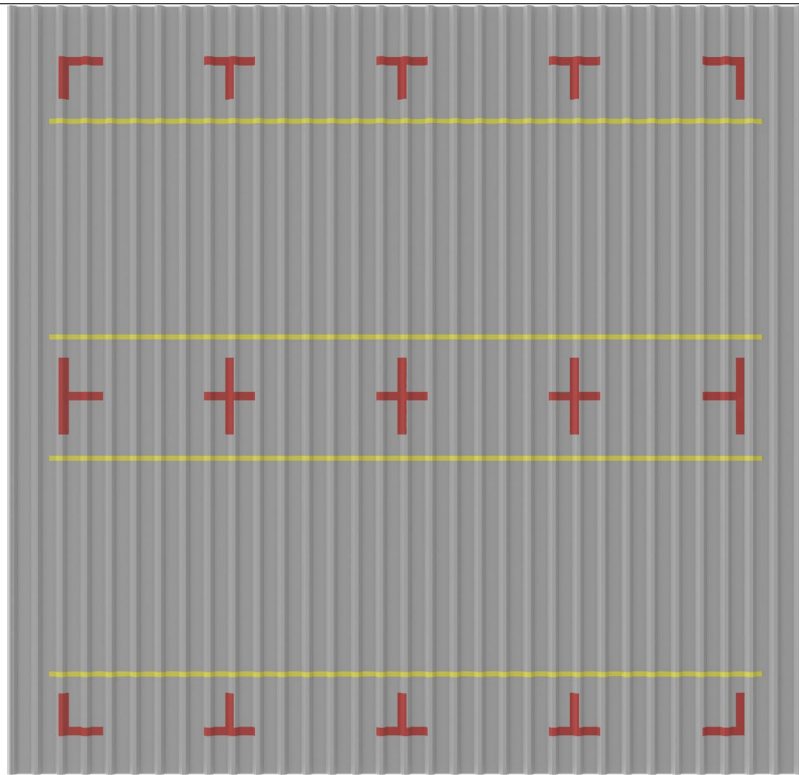
HEYCO Sunrunner Cable Clip
4000382

Assembly



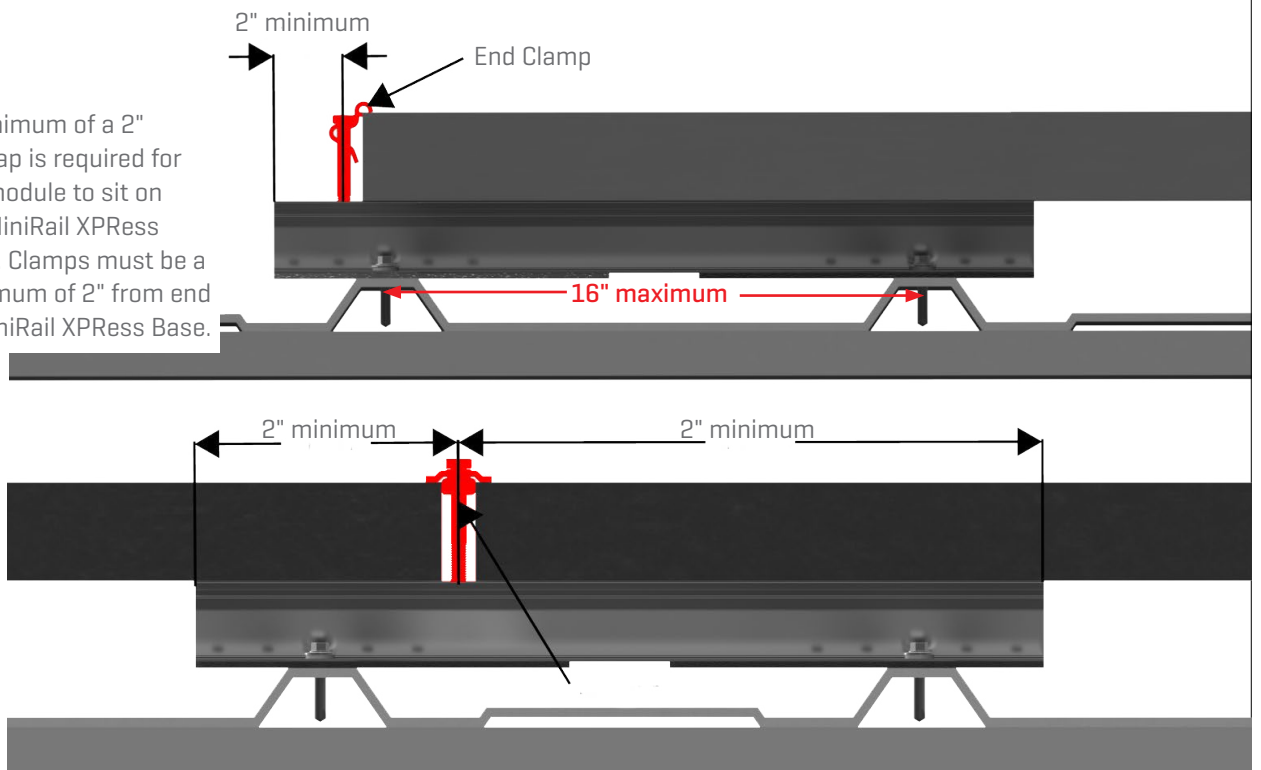
1

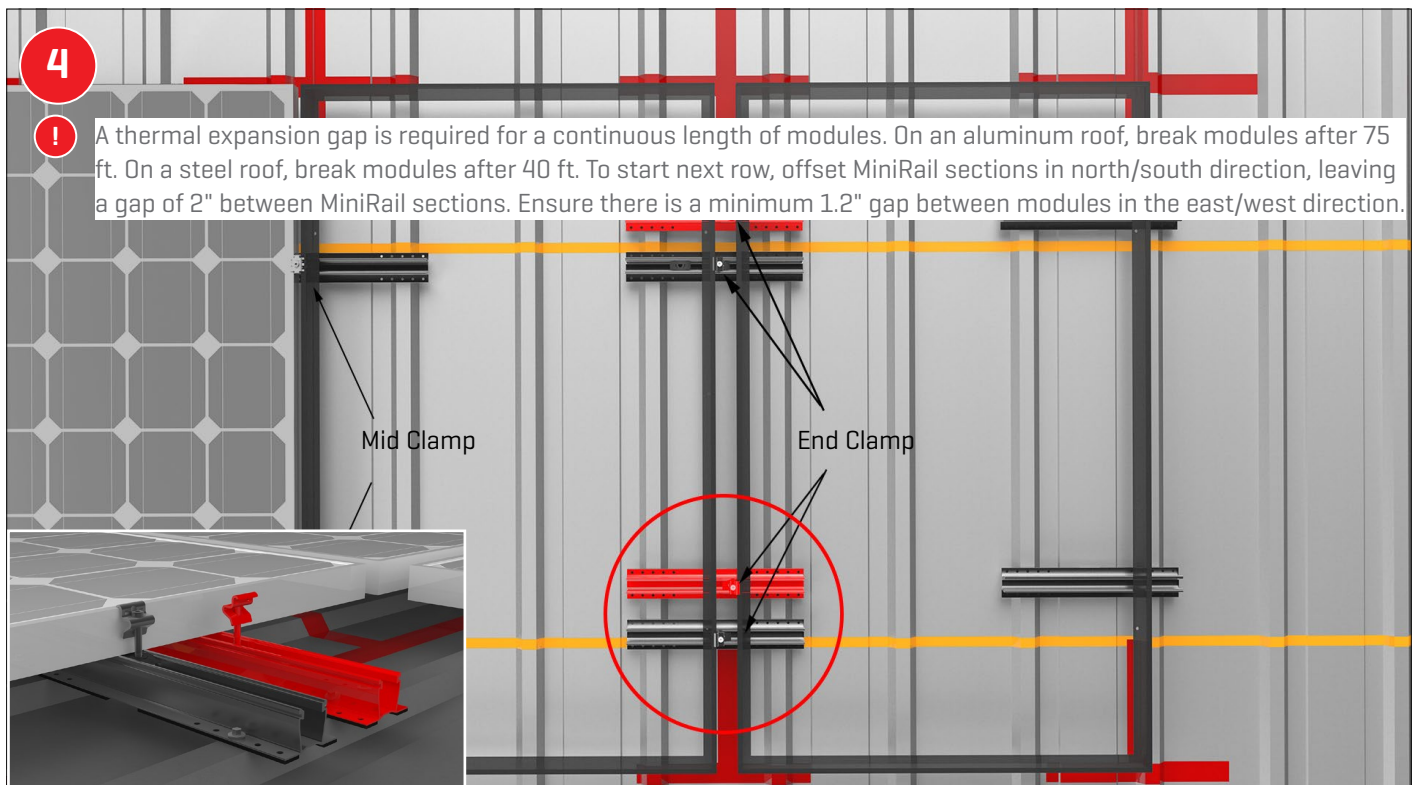
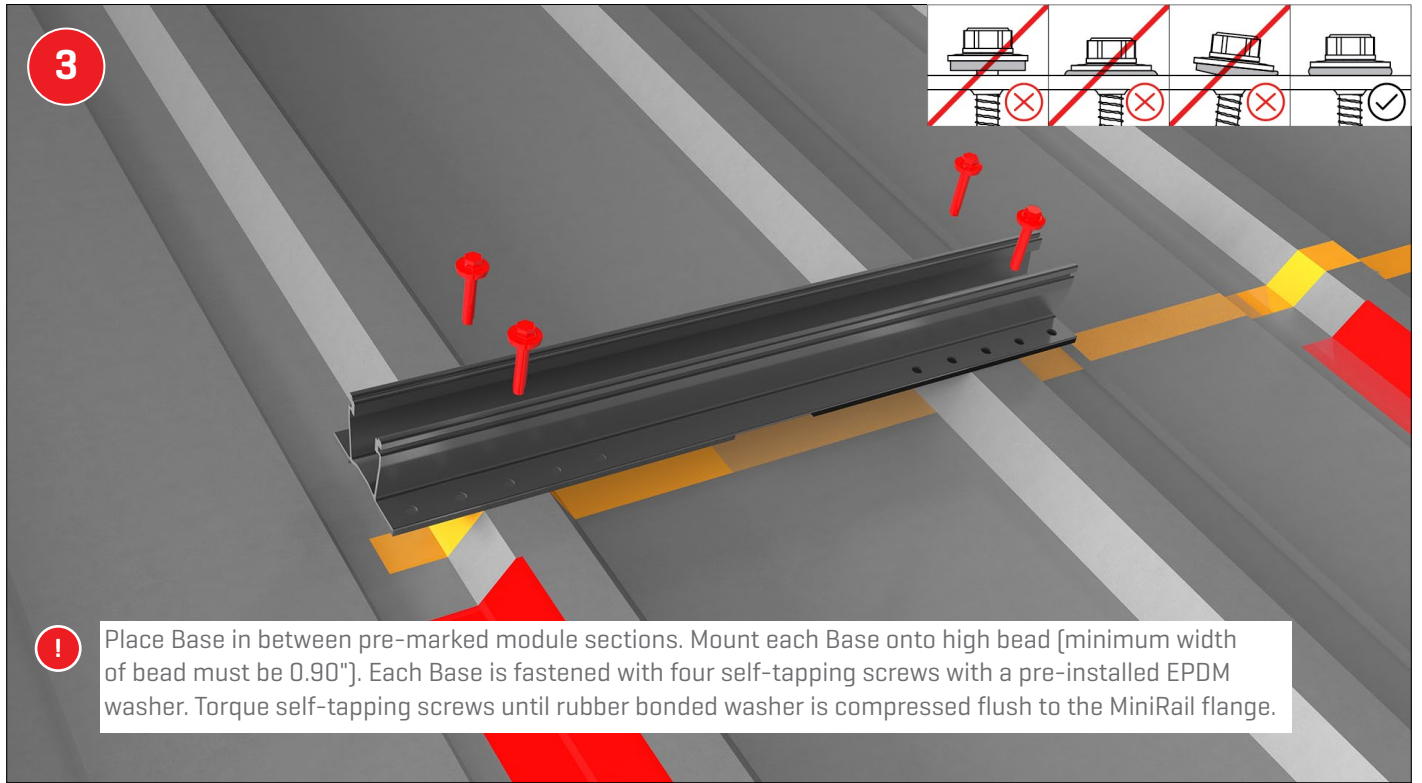
- ! Use string or chalk lines to mark positions of module edges [shown in red]. Measure up from corner of modules to module approved clamping location. Mark module approved clamping locations across array layout [shown in yellow]. Max trapezoidal peak-to-peak spacing is 16".

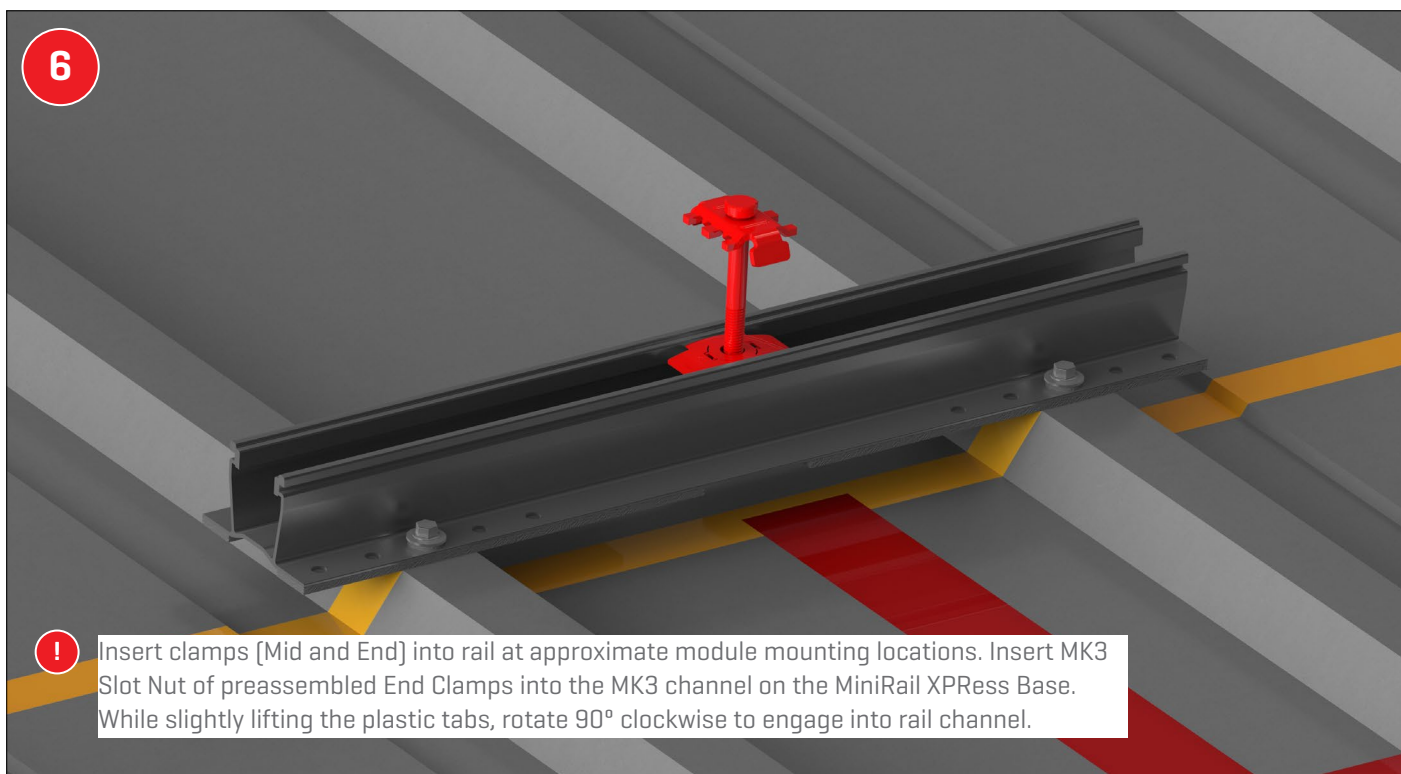
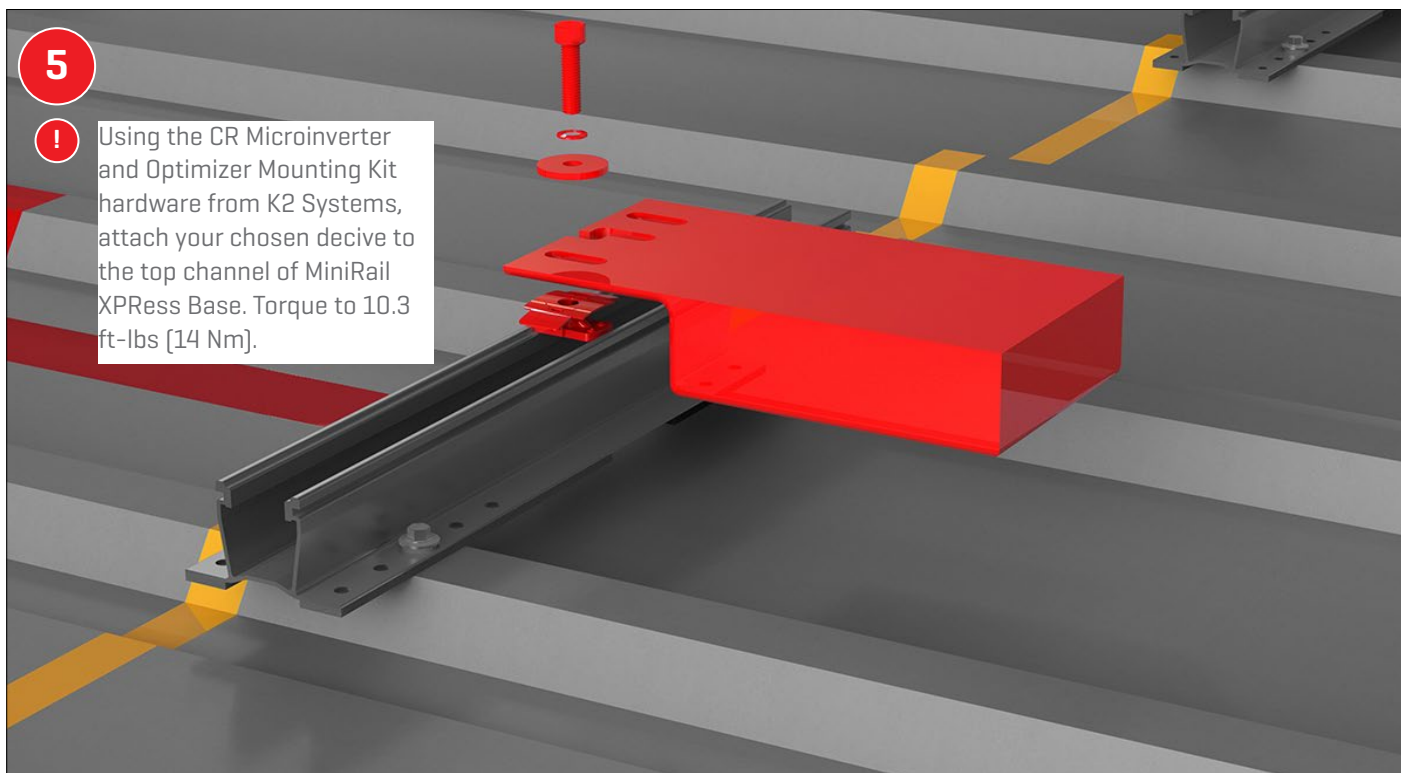


2

- ! A minimum of a 2" overlap is required for the module to sit on the MiniRail XPress Base. Clamps must be a minimum of 2" from end of MiniRail XPress Base.



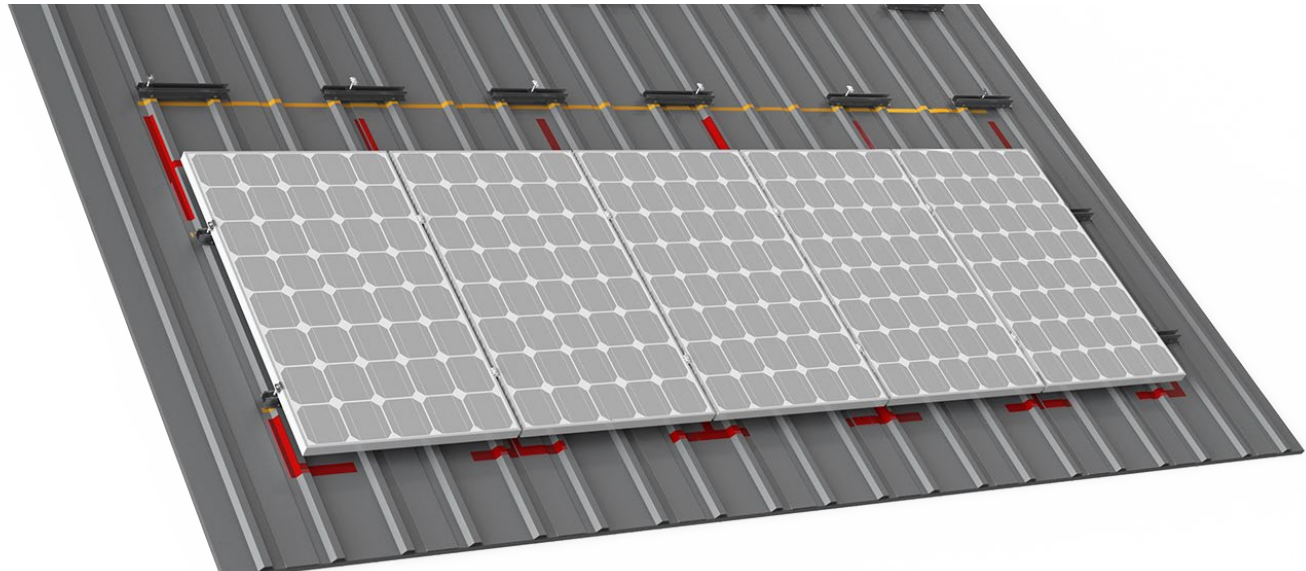




7



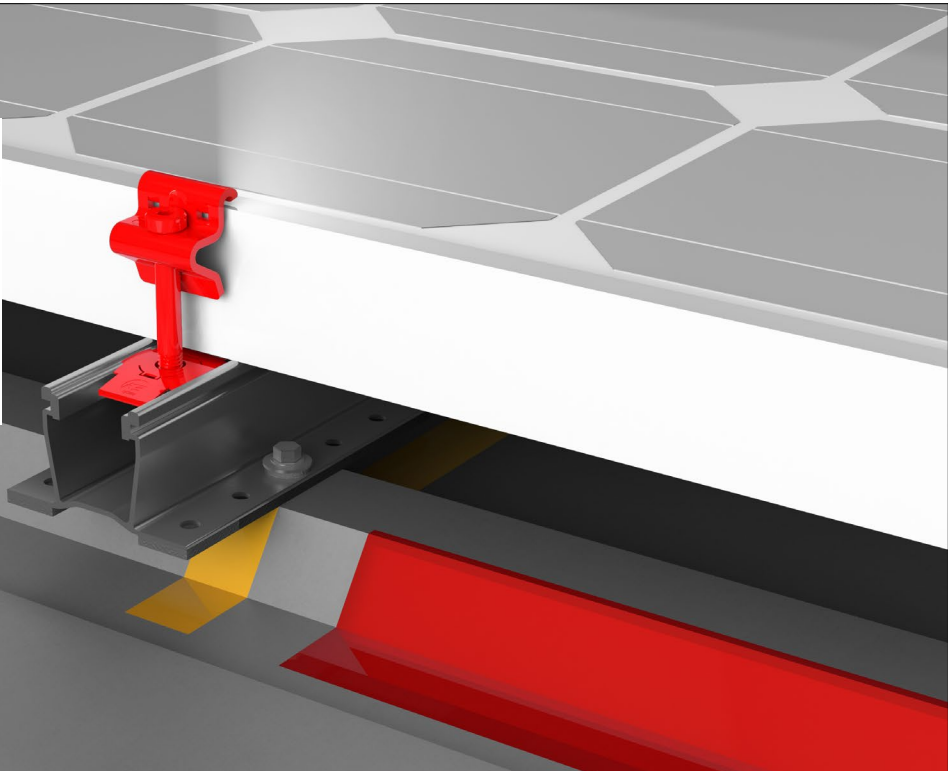
Layout your PV modules according to your site-specific design. Always consult a licensed Professional Engineer for structural validity of your design. Attach your PV modules using Mid and End Clamps.

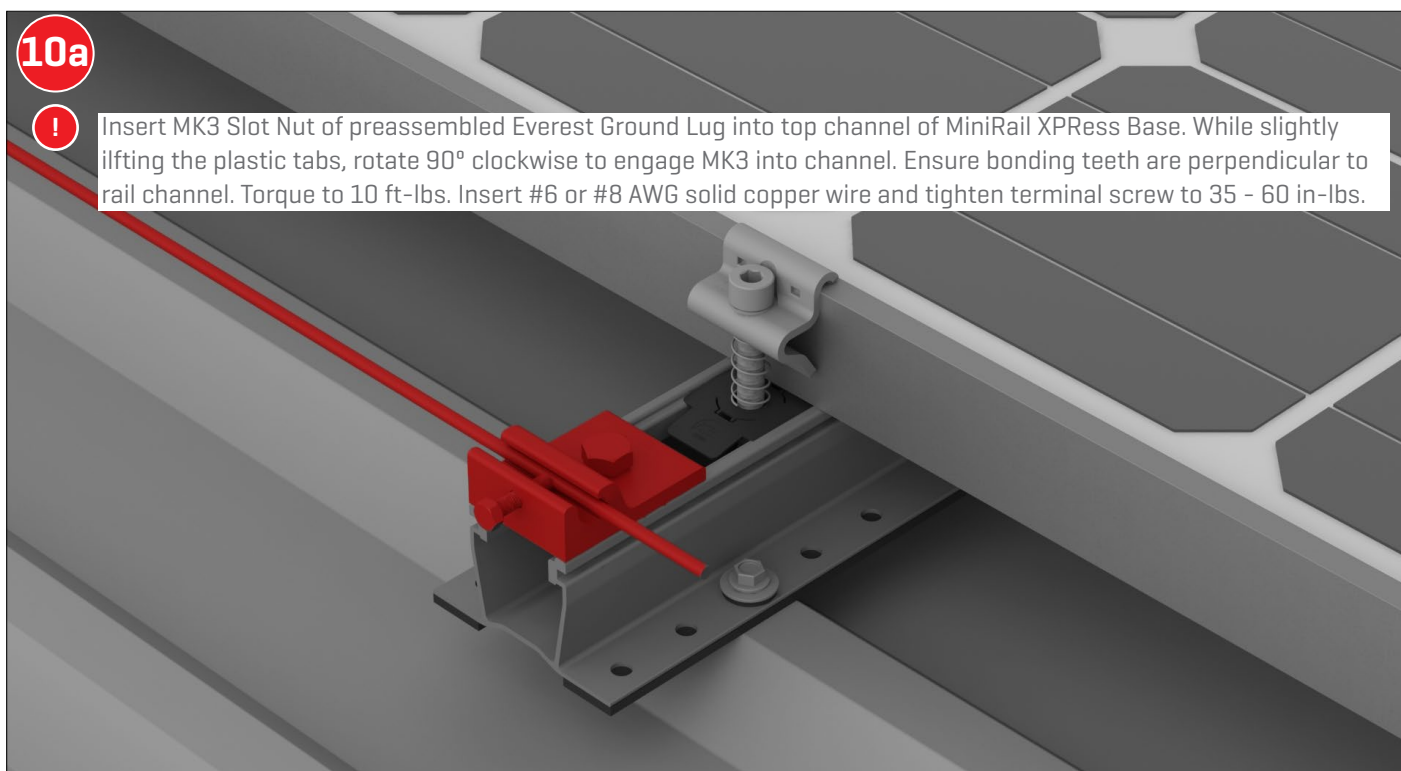
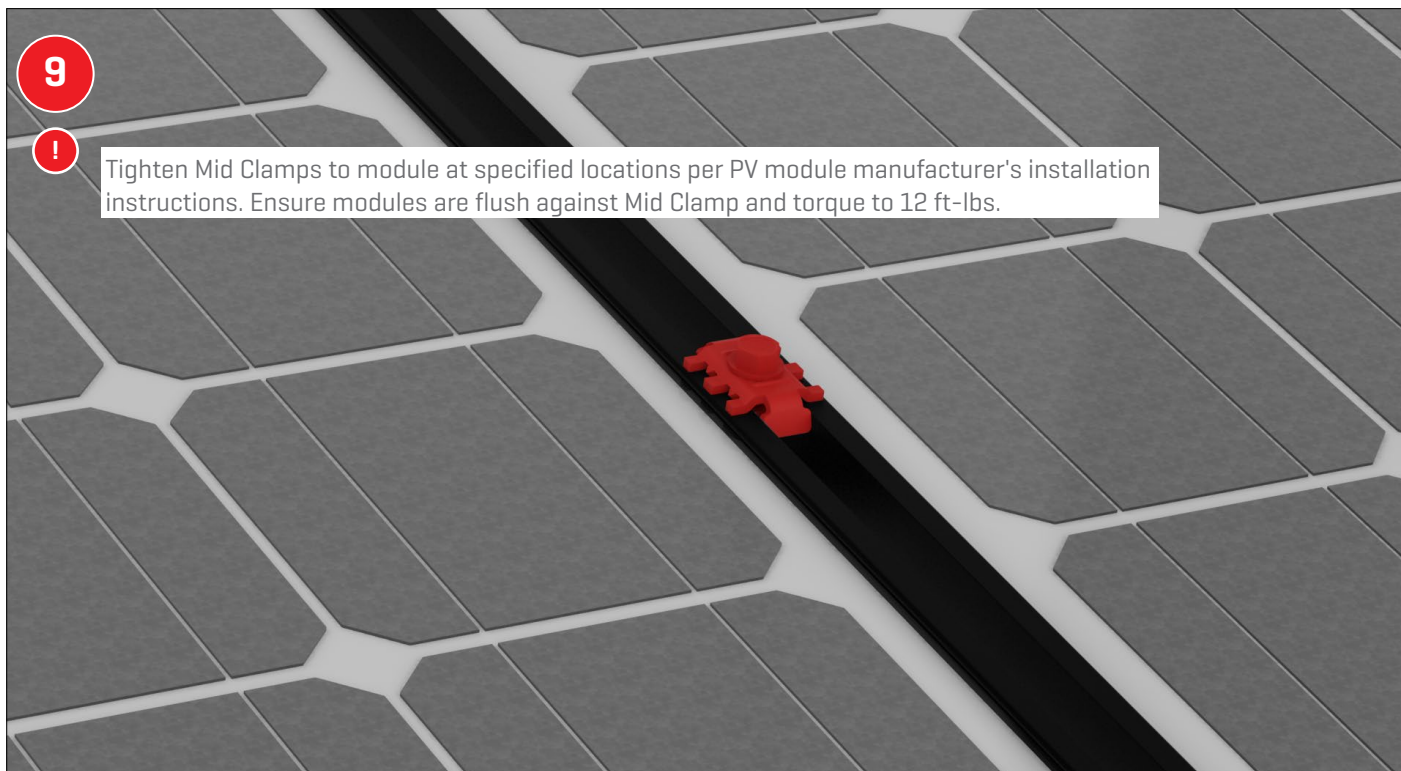


8



Tighten end clamps to module at specified locations per PV module manufacturer's guidelines. Torque to 10.3 ft-lbs [14 Nm]. Ensure clamp sits flush against frame of PV module. Ensure minimum gap of 2" [50.8mm] exists from end of rail to clamp.

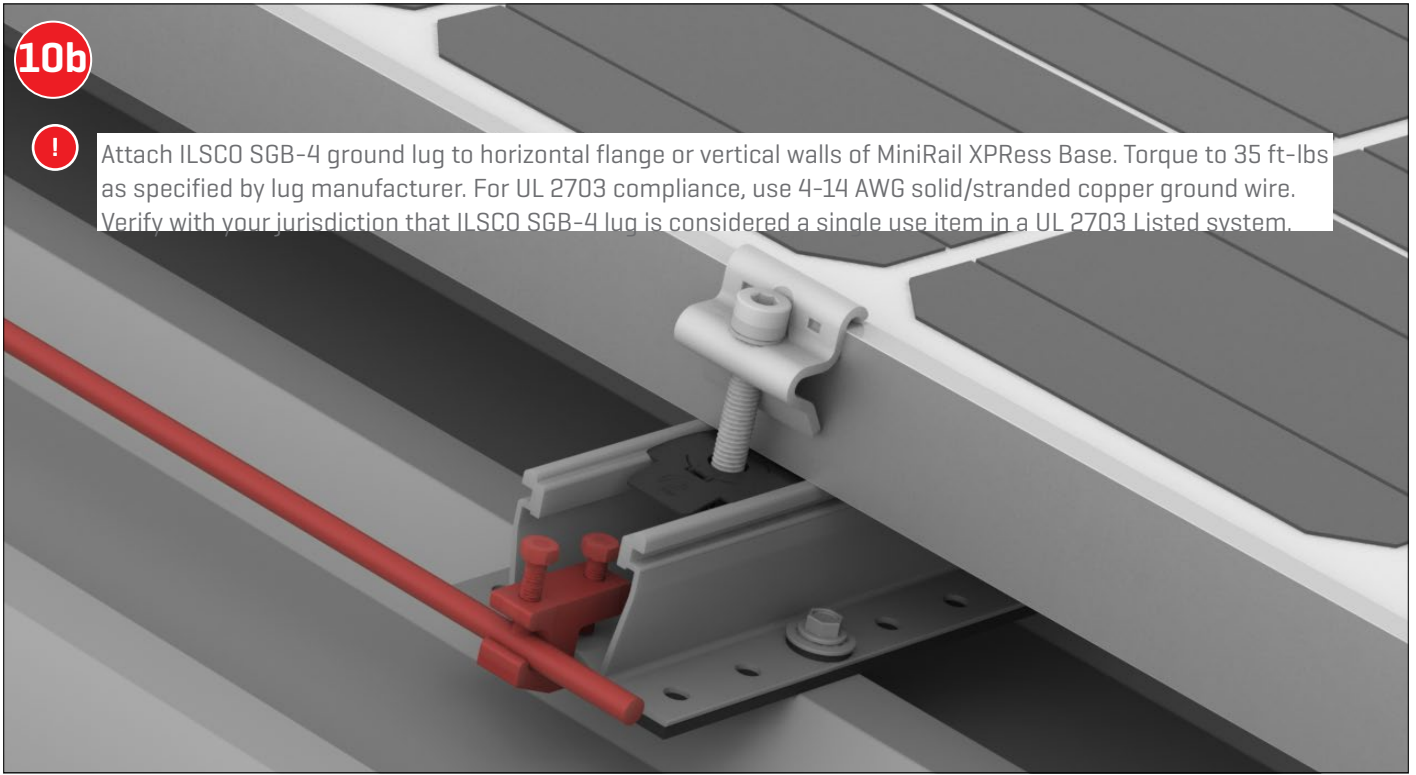




10b



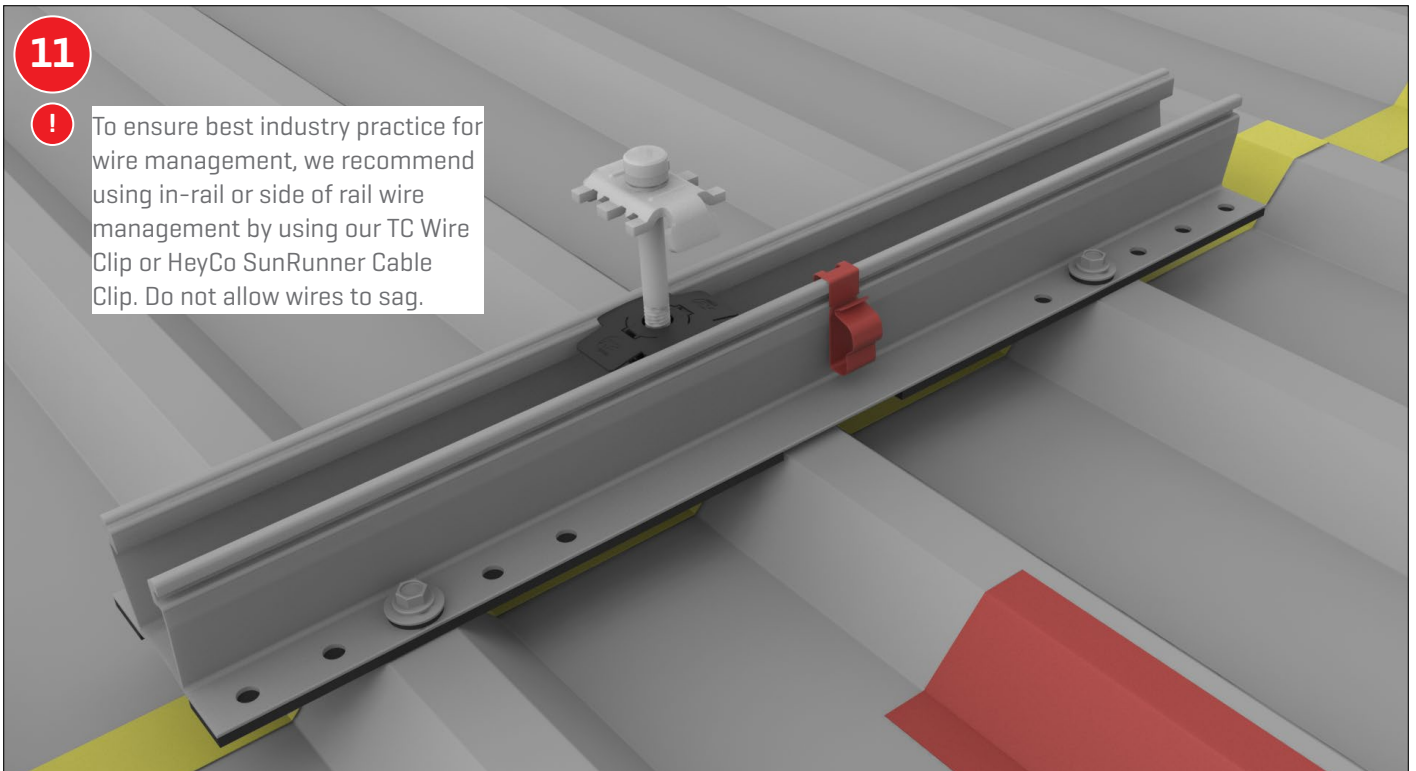
Attach ILSCO SGB-4 ground lug to horizontal flange or vertical walls of MiniRail XPress Base. Torque to 35 ft-lbs as specified by lug manufacturer. For UL 2703 compliance, use 4-14 AWG solid/stranded copper ground wire. Verify with your jurisdiction that ILSCO SGB-4 lug is considered a single use item in a UL 2703 Listed system.



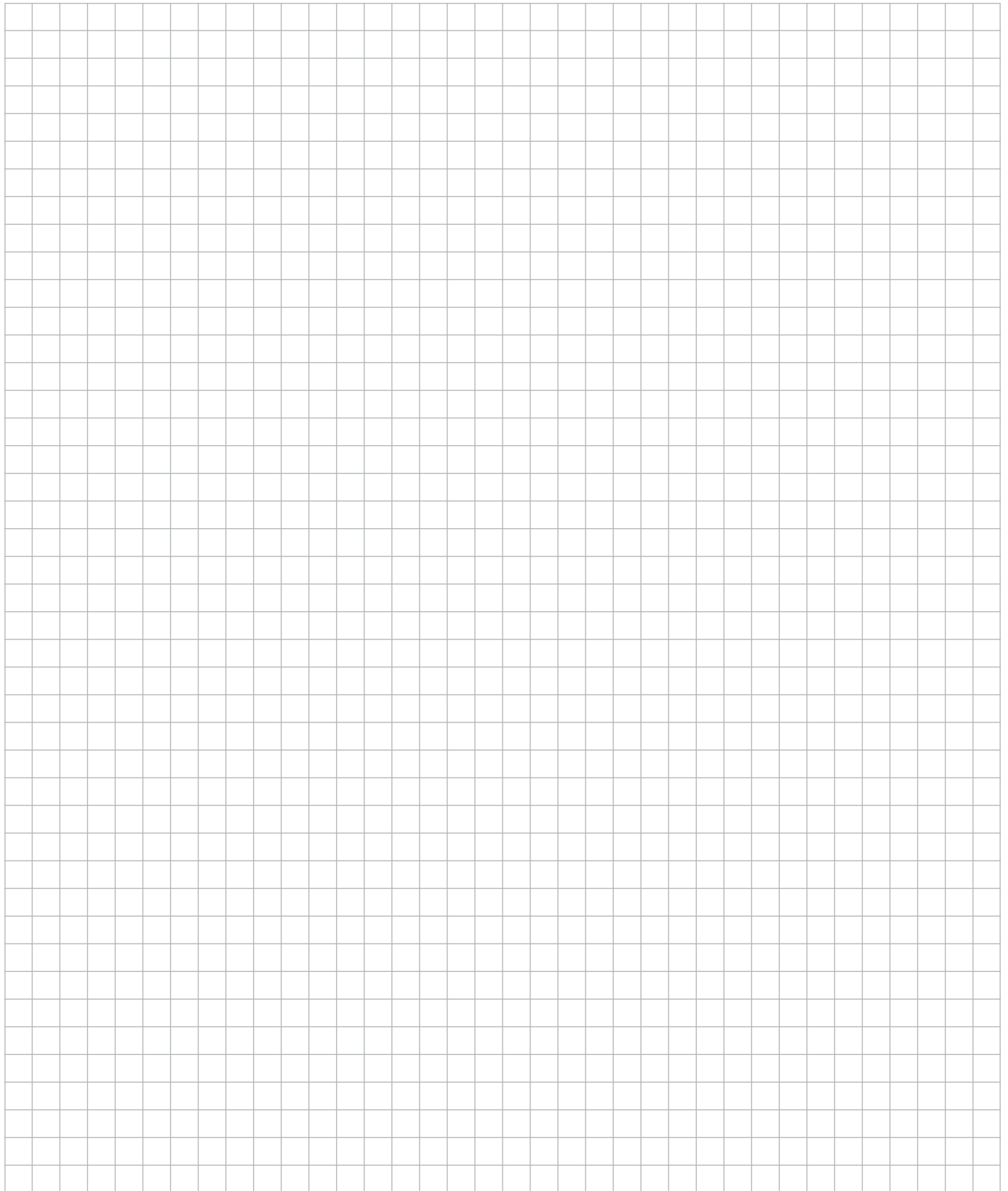
11



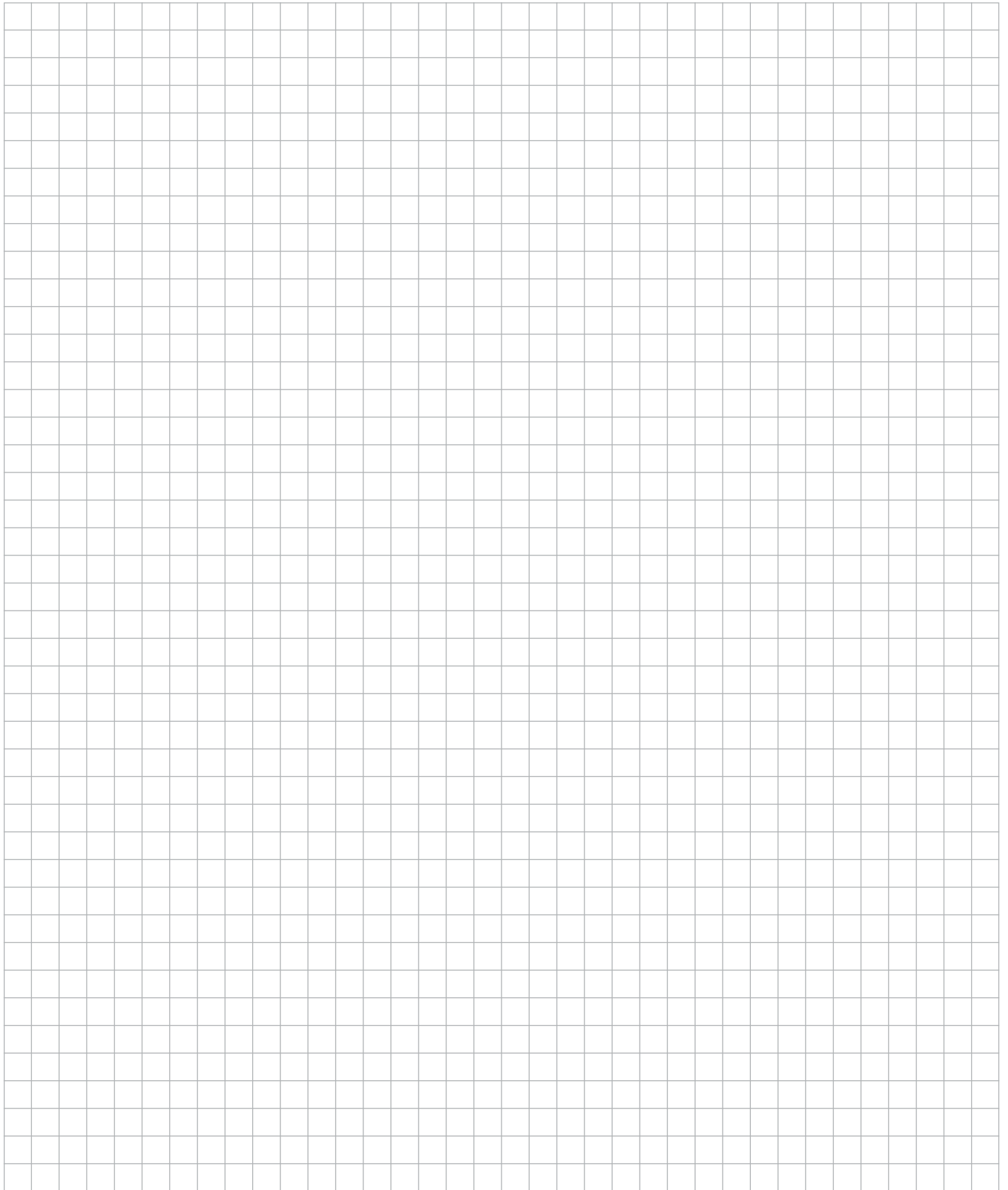
To ensure best industry practice for wire management, we recommend using in-rail or side of rail wire management by using our TC Wire Clip or HeyCo SunRunner Cable Clip. Do not allow wires to sag.



Notes



Notes



We support PV systems
Formerly Everest Solar Systems 



Thank you for choosing a K2 mounting system.

Systems from K2 Systems are quick and easy to install. We hope these instructions have helped. Please contact us with any questions or suggestions for improvement.

Our contact info:

- ▶ k2-systems.com/en-US/contact
- ▶ Telephone: +1.760.301.5300

K2 Systems, LLC
4665 North Avenue, Suite 1
Oceanside, CA 92056
USA
+1.760.301.5300
info-us@k2-systems.com
www.k2-systems.com